

Dairy XL principles



Lower input and better output

The ultimate aim is to produce high-quality milk in the tank and how we get it there. By reviewing the value-adding activities on the farm, which lead to milk in the tank, we came to the automated barn principles. By eliminating unnecessary activities on the farm and optimizing workflows in the chain, results will improve. Within the concept, we focus on lower inputs and manage for higher outputs. This, overall, leads to more profitable farming.

Large dairy farming according to Lely

See what the concept does or email dairyxl@lely.com



Lely makes a huge difference to one cow

Imagine this effect multiplied by.....

Build to manage

Lely understands their customers and their cows. The lactation cycle of the cow has been translated in the design of the concept. Lely again takes another step forward in automating farming as, until now, farms have been built to milk instead of built to manage. Combining the data of individual cows and their next activity in the lactation cycle, we plan the routines for farm managers and workers to effectively manage the herd. This is what automation really is about. The concept facilitates effective management of work flows and provides information at the point of use to maximize performance.

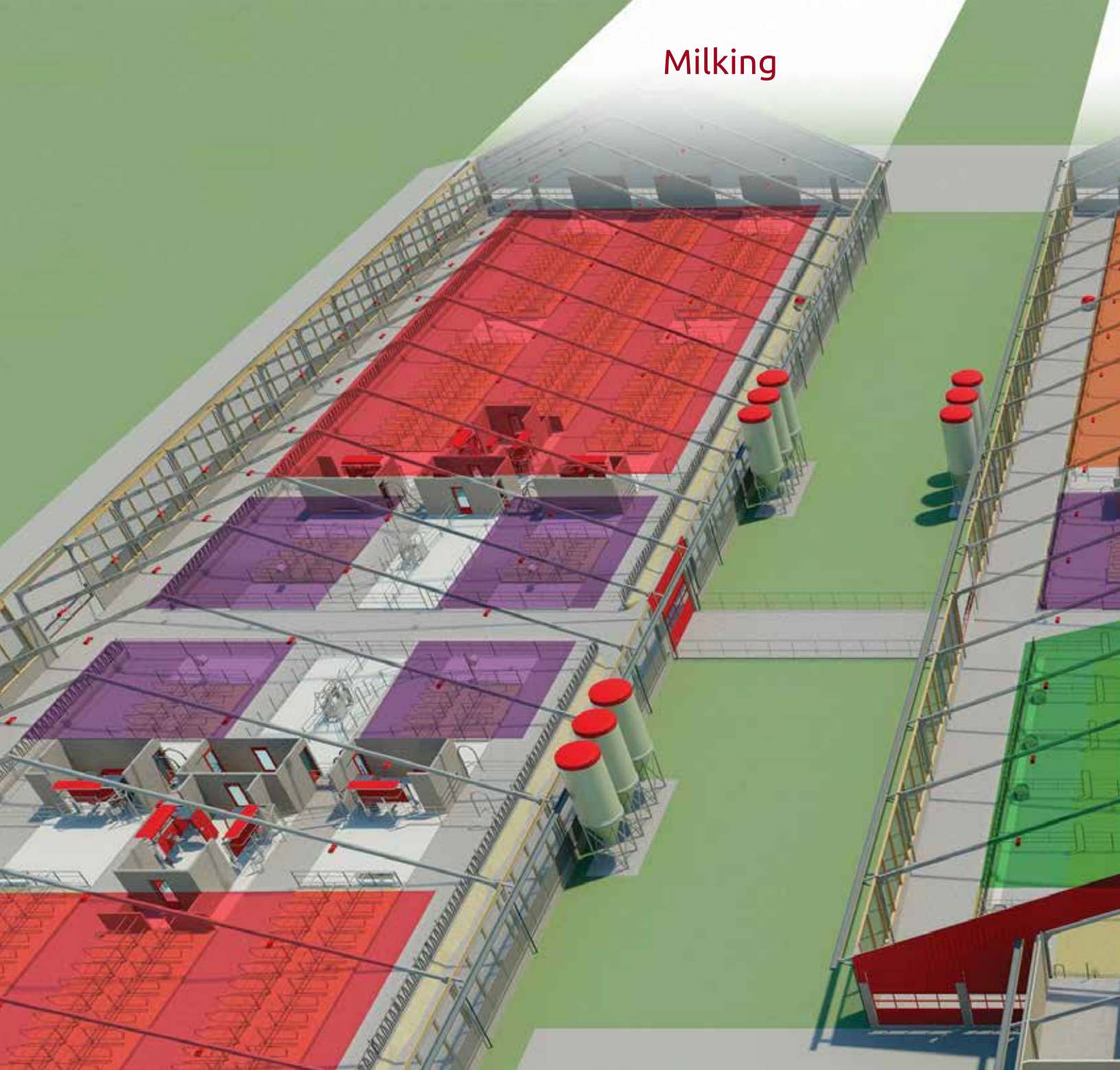
<< Unfold the Lely Dairy XL principles barn



Lely Dairy XL principles

Designed around the nine cow touches to manage the lactation cycle of the cow.

Milking



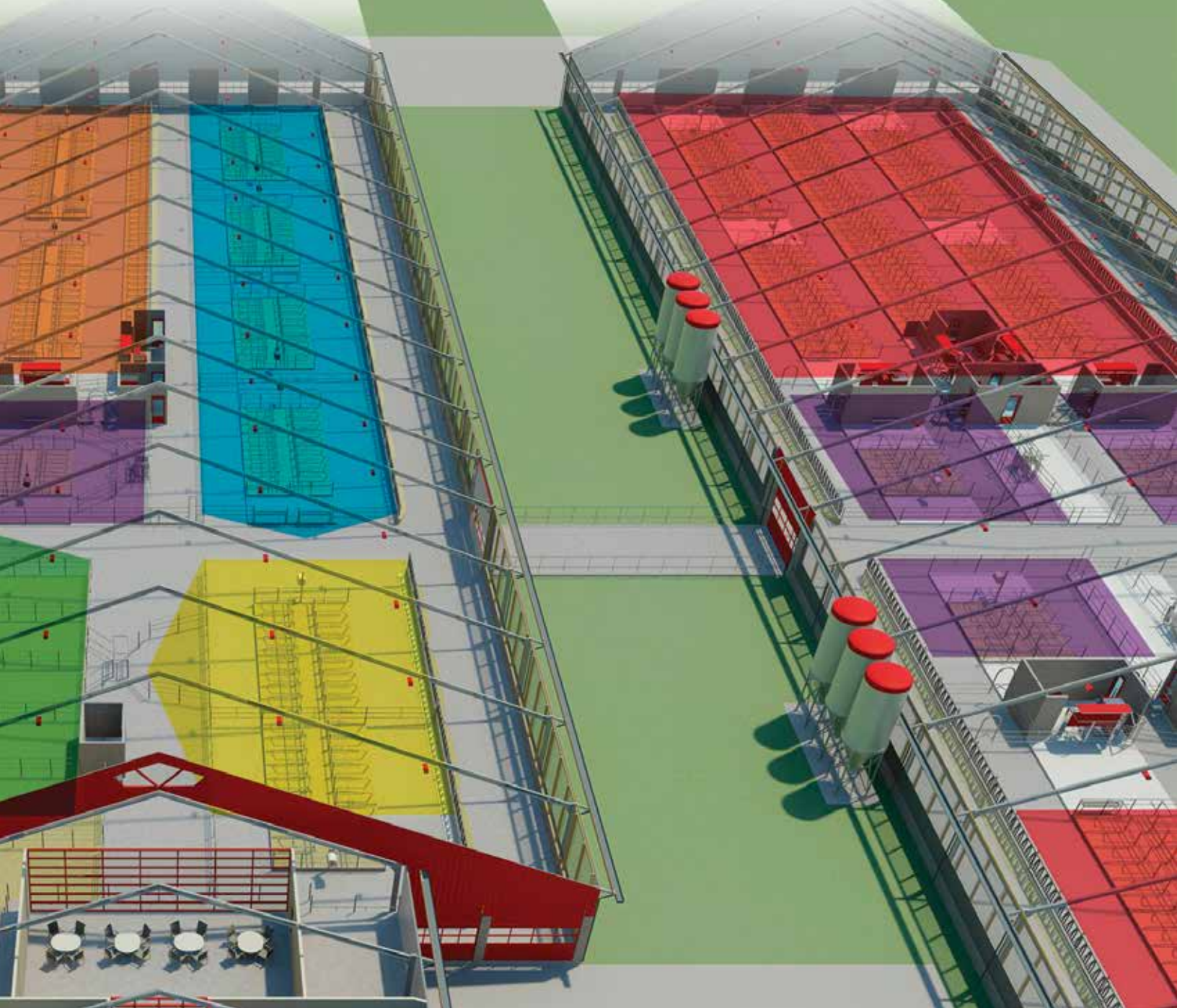
A

Cows don't have time

Cows have to produce milk so we should leave the cows alone and let them get on with it! Cows should stay in their dedicated groups and we have to work around them.

Transitioning

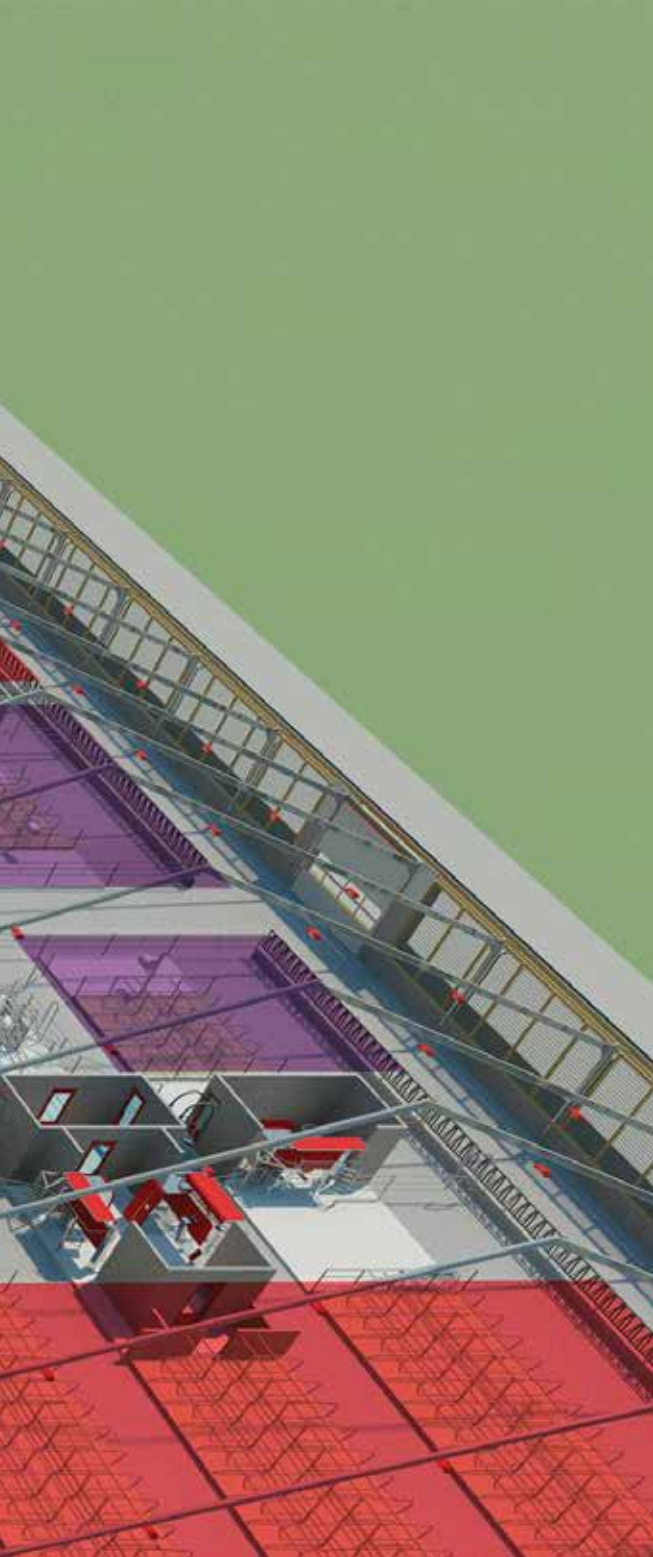
Milking



B

Situate labor around the cow

The concept barn is an optimum for both cows and people. Each part of the design is focused on a particular part of managing the lactation cycle of the cow. A pleasant working environment has been created by managing the herd and taking care of the individual cows in an enjoyable way.



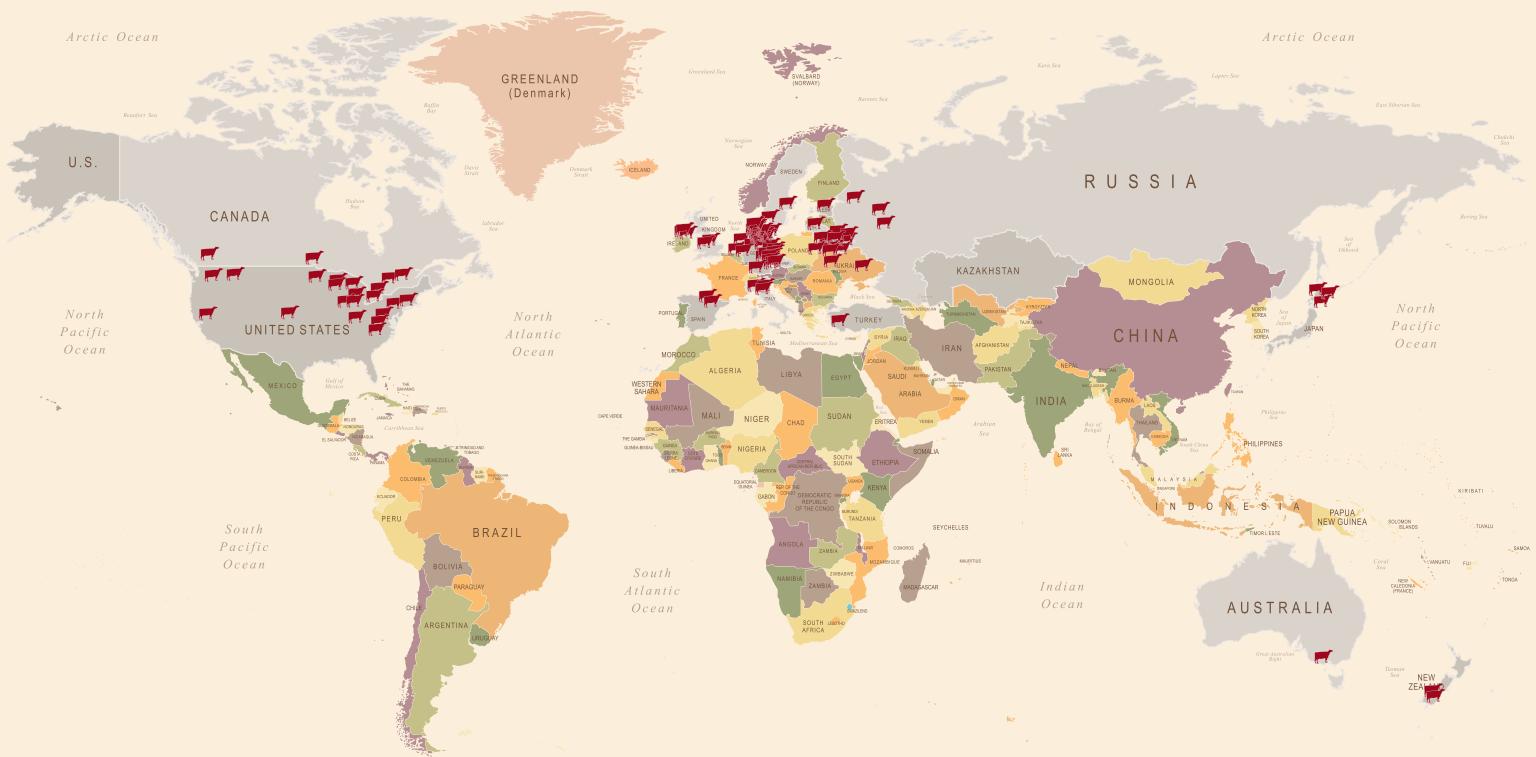
- far off
- close up
- stress-free calving
- lactation start
- milk groups
- separation treatment areas

C

Management focus increases efficiency

Effective routines and standard operating procedures for all key activities. Enjoyable and high-quality working routines drive optimal milk production and ultimately enhance farm profits.

Global presence, local knowledge



See what Lely does for large dairy farms and get locally connected:

www.lely.com/DairyXL

dairyxl@lely.com

Lely, Astronaut, Astri, Atlantis, AWS, C4C, Calm, Caltive, Capsule, Commodus, Compedes, Cosmix, Discovery, F4C, Gravitor, Grazeway, Hubble, InHerd, Juno, L4C, Lely Center, Lelywash, Luna, Nautilus, Orbiter, Quaress, Qwes, SAE, Shuttle, T4C, Vector, Viseo, Voyager and Walkway are registered trademarks of the Lely Group. The right of exclusive use belongs to the companies of the Lely Group. All rights reserved. The information given in this publication is provided for information purposes only and does not constitute an offer for sale. Certain products may not be available in individual countries and products supplied may differ from those illustrated. No part of this publication may be copied or published by means of printing, photocopying, microfilm or any other process whatsoever without prior permission in writing by Lely Holding S.à r.l. Although the contents of this publication have been compiled with the greatest possible care, Lely cannot accept liability for any damage that might arise from errors or omissions in this publication.